

UbiqVue™ Multiparameter System

Active Patient Monitoring without Boundaries



Scalable, near real-time vital-sign surveillance that expands capacity, supports continuity of care across ward and hospital-at-home pathways.

Continuous Clinical-Grade Monitoring

- Tracks multiple vital signs in near real time.
- Enables earlier detection of patient deterioration and proactive intervention.
- Uninterrupted data across hospital, outpatient, or home settings.

Patient Comfort, Clinical Efficiency

- Biosensors allow freedom to shower, sleep, and move.
- Eliminates frequent manual spot-checks, boosting patient satisfaction and adherence.
- Smart alerts minimize alarm fatigue, while freeing staff to focus on higher-value care.

Scalable, Secure, and Cost-Effective

- Cloud-based platform with low infrastructure needs - fast to deploy from pilot to full ward.
- Lower Capex: ~\$3K to cover a ward, reduced cleaning, reuse, and maintenance costs.
- HIPAA/GDPR-compliant, EMR integration-ready.



Compatible with Wearable Biosensors:

- UbiqVue 2A Biosensor
- UbiqVue 2AY Biosensor
- UbiqVue 1AX Biosensor

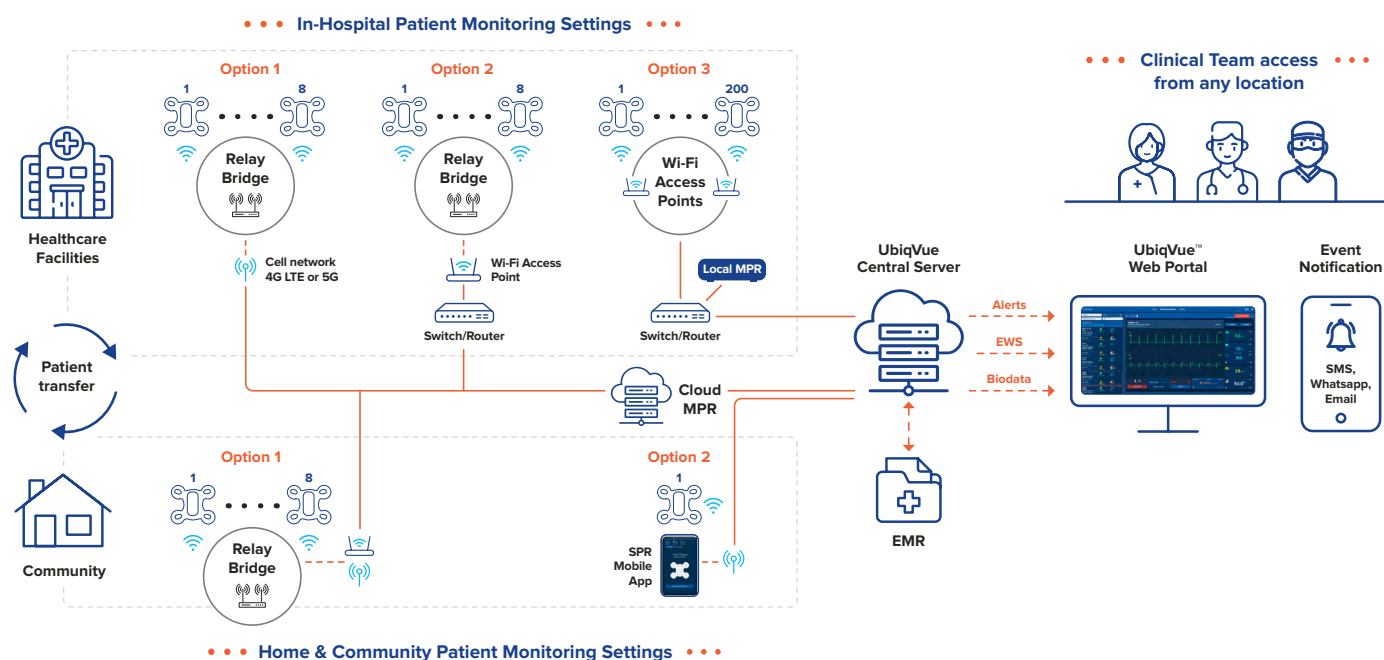


FDA 510(k) Cleared | Rx Only

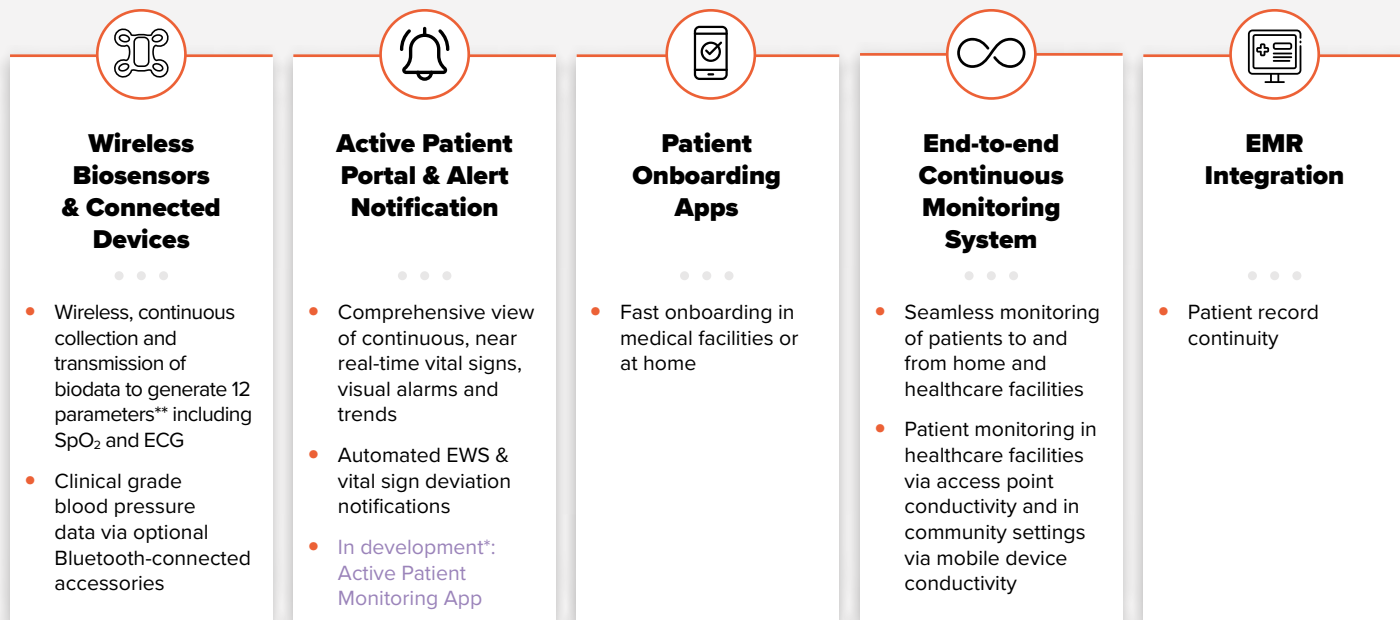
Technology designed to automate healthcare delivery

UbiqVue is the first FDA-cleared, proven, wireless active patient monitoring system produced for mass deployment.

UbiqVue Multiparameter Architecture



System Components



Scalable active patient monitoring without boundaries

Rapid expansion of patient monitoring in hospital and out-of-hospital settings.

Actionable clinical insights

- **Dynamic multi-patient dashboard** with configurable views enables efficient monitoring of large cohorts, with filtering by ward, condition, or alert status.
- **Continuous near real-time monitoring** with ECG, temperature, SpO₂, and optional Bluetooth blood pressure, supporting NEWS2-relevant assessments.
- **Automated early warning score** and vital sign deviation notifications to support timely escalation.
- **Tailored access** ensures the right teams receive targeted alerts, with escalation pathways that support safe handovers and accountability.



Connect

Onboard patients quickly in the Portal
- Biosensor applied in-clinic or self applied by patient.



Monitor

Multi-patient dashboard with configurable alerts delivered to the right roles, via SMS, WhatsApp or email.



Act

Act on trends and notifications, document with on-demand reports, and continue monitoring across settings - ward and home.

For more information visit www.lifesignals.com

UbiqVue Multiparameter Specification

Use case support	Wireless healthcare facilities, Hospital-driven care at home
User access & configuration	<ul style="list-style-type: none"> System access and compatibility <ul style="list-style-type: none"> Active Monitoring Portal: any web browser Active Monitoring App*: Android/iOS mobile device Role and group-based system for patient data access, and alert delivery and configuration. <ul style="list-style-type: none"> Roles: Admin, Physician, Clinician, Supervisory Clinician (role names are configurable) Groups: location (configurable, e.g., ward, department) and medical condition (configurable, e.g., cardiac, sepsis) Scalable system. No maximum limits for the number of users or groups
Alert capabilities	<ul style="list-style-type: none"> Alert categories <ul style="list-style-type: none"> <i>Clinical</i> (Heart Rate, SpO₂, Pulse Rate, PPG, Respiration Rate, Skin Temperature, Body Temperature, Posture, Motion, Systolic, Diastolic) <i>Technical</i> (Lead Off, Low Battery, Wireless Disconnection, Server Communication Disconnection, Replace Biosensor) <i>Manual</i> (Patient or Clinician-initiated Event) Alert Configuration <ul style="list-style-type: none"> Alert Thresholds (Low and High for each clinical parameter,) Alert delay time (configurable) Alert Priority (Low, Medium and High, based on configurable alert acknowledgement frequency and breakthrough settings) Default settings can be set for location groups or clinical condition groups. Configurable for individual patients. Alert delivery methods (configurable) <ul style="list-style-type: none"> SMS WhatsApp Email Active Monitoring Portal Active Monitoring App* Additional alerting functions <ul style="list-style-type: none"> Alert acknowledgement with configurable reminder and escalation features Alert forward on demand
Patient Monitoring User Views	<ul style="list-style-type: none"> Multi Patient Dashboard (summary live display of monitored parameters & alert status, 8 & 18 patient grid options with page scroll of all patients, filter capabilities for auto selection of patients) Single patient Detailed view (detailed live and trend views of monitored parameters, alert information, settings & status, and patient demographics) All Current Patients (search and filter capabilities) All Active & Recent Clinical alerts (search and filter capabilities) All Active Technical Alerts (search and filter capabilities) All Active & Recent Alerts by Group (filter by location and medical condition)
Patient Onboarding	<ul style="list-style-type: none"> Patient registration (Active Patient Monitoring Portal and App* support) Skin preparation and biosensor placement guidance (GIF based demonstration, quality of ECG and SpO₂ signal feedback) Biosensor status indicator (Low Battery, Wireless Connectivity, Mobile Data / Internet Connectivity, Lead Off)
Data availability	Near real time (latency of less than 10 seconds with internet connectivity)
Data privacy & Security	HIPAA & GDPR compliant system
On-demand Patient Reports	<ul style="list-style-type: none"> Patient monitoring session report Heart Rate variability report
EMR Connectivity	Yes, API support
HIMS Connectivity	Yes, API support

